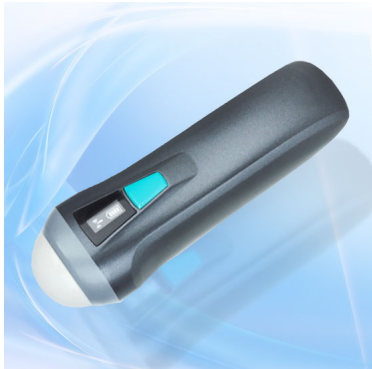


## UProbe-S



Wireless ultrasound sector transducer - a wireless array probe scanner for veterinary

Rating: Not Rated Yet

[Ask a question about this product](#)

### Description

Wireless ultrasound sector transducer - a wireless array probe scanner for veterinary

Wireless ultrasound sector transducer UProbe-S - a wireless array probe scanner for veterinary. This wireless probe scanner with integrated ultrasound circuit boards inside, can wireless connect to the PC Tablet, Smartphone that after installed ultrasound software, then realize the functions of a ultrasound scanner.

Application: abdomen, obstetrics, pregnancy test

### Specification:

- Scan mode: sector sweep
- Display mode: B, B/M
- Frequency?3.5 MHz
- Depth: 100 – 180 mm
- Measure: distance, area, obstetrics
- Battery last: 4 hours
- Dimension: 138mm×44mm×38mm
- Weight: 200 gram
- Wifi type: 802.11g/20MHz/2.4G
- Work OS: Apple iOS and Android
- Image frame rate: 12f/s